



Bharat Survey for EdTech 2025



Bharat Survey for EdTech (BaSE) 2025 is the second edition of a first-of-its-kind, large-scale national survey by Central Square Foundation (CSF). It provides insights into access to and use of technology for teaching and learning among parents, children and teachers from low-income backgrounds in India.

Key Themes

Foundational Themes



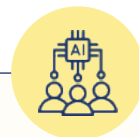
Access to Technology

Explores availability of technology infrastructure, smartphones and the internet, extent and duration of usage of smartphones and reasons for non-availability/non-use of devices



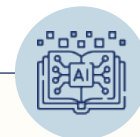
Usage of EdTech

Explores trends around tech tools used for teaching and learning, prevalent use-cases of EdTech, drivers of EdTech use and most valued features



User Sentiment around EdTech Adoption

Explores user sentiment around the education system, engagement with learning and mentoring avenues outside of school, risk perceptions, challenges associated with EdTech use and perceived impact of EdTech on teaching and learning



AI Awareness and Usage

Explores awareness and use of AI for the purpose of teaching and learning, preferred AI apps, risk perceptions and most valued features

Additional Theme

Survey Coverage and Sample

BaSE 2025 was administered across **10 Indian states, including Gujarat, Kerala, Madhya Pradesh, Maharashtra, Mizoram, Odisha, Tamil Nadu, Telangana, Uttarakhand and Uttar Pradesh**, between August 2025 to January 2026, covering both urban and rural settlements. The states were selected so as to be representative of varying state population sizes, levels of internet penetration and geographical spread.



Survey Sample



The respondents are parents, learners and teachers in Grades 1–12 across government and affordable private schools

HOUSEHOLD SURVEY FINDINGS

1. Access to Technology

- **Smartphone access at a household level:** 90% of households own at least one smartphone, with **57% (over half)** owning two or more smartphones.
- **Smartphone access at a child level:** 72% of children from surveyed households have access to smartphones. While **69%** have shared access, **3%** have dedicated access. Urban children and those in higher grades are more likely to have smartphone access. No gender differences are observed.
- **Frequency and duration of smartphone access:** 66% of children with smartphone access use them daily. **84%** of children use their smartphones for at least 30 minutes in a day. On average, older children, boys, government school-going children and children from smaller households spend more time using smartphones each day.
- **Access to internet:** 99% of children with smartphone access could access the internet on their device. While **69%** always have internet access, **30%** have intermittent access.

2. Usage of EdTech

- **EdTech awareness:** 81% of children are aware that technology could be used for learning. However, rural children and younger children are less likely to be aware of EdTech.
- **EdTech usage:** 63% of children use technology for learning. While **5%** have discontinued the use of EdTech after using it in the past, **14%** are aware of EdTech but have never used it.
- **Frequency of EdTech usage:** 58% of EdTech-using children use it daily, while **36%** use it a few times a week. Older children and private school-going children are more likely to use EdTech daily.
- **EdTech use cases:** Primary use cases of EdTech include practice and doubt solving (**77%**), test preparation (**47%**) and self learning new skills (**40%**).
- **Commonly used tools:** YouTube is the most popular tool (used by **94%** of EdTech-using children), followed by WhatsApp (**67%**) and Google (**49%**). **6%** of EdTech-using children used a specialised EdTech application like DIKSHA, among others.

3. User Sentiment around Education and EdTech

- **Sufficiency of in-school education:** While **61%** of parents feel their child's in-school education is completely sufficient for their learning needs, **35%** feel it is somewhat sufficient. Only **2%** report it is not at all sufficient.
- **Perceived impact of EdTech:** **75%** of EdTech-using children report improved learning outcomes for children. **95%** feel that EdTech helps parents support their child's learning.
- **Perceived risks of EdTech:** **60%** of respondents agree that use of EdTech by children is associated with risks. Top risks acknowledged are linked to overuse (**66%**) and wrong information (**46%**).
- **Support for EdTech adoption:** **84%** of respondents report they would recommend EdTech to others. While **53%** expressed a desire to increase their EdTech use, **39%** wished to maintain current levels.

4. Usage of GenAI for Learning

- **Awareness of GenAI:** **50%** EdTech-using children have heard of artificial intelligence (AI) and **43%** know of its application for learning. Of those who are aware of GenAI, **85%** say that they understand how it works. However, **72%** (over two thirds) of them mistake it for an internet search application. Urban children and older children are more likely to have heard of GenAI.
- **Use of GenAI:** **35%** of EdTech-using children use GenAI for learning-related activities; **96%** of GenAI-using children use it multiple times a week, including **69%** who use it daily.



1. Access to Technology

- **Access to devices at home:** **98%** of teachers have access to a smartphone at home, with **94%** using it for teaching and school-related activities. Fewer teachers have access to other devices such as laptops (**18%**), tablets (**15%**), or desktops (**11%**) at home.
- **Access to devices in school:** **69%** of teachers have access to at least one technology device in school. Smart classroom systems are the most commonly accessible (**44%** access, **40%** usage), followed by laptops and desktops (**34%** access, **24%** usage) and tablets (**29%** access, **21%** usage).
- **Frequency of access to devices in school:** **63%** of teachers with in-school devices have frequent access (at least five days a week). Government school teachers are more likely to have frequent access (**67%**), as compared to private school teachers (**54%**). Similarly, older teachers (aged 51-60 years) are more likely to have frequent access (**71%**), as compared to teachers under 30 (**58%**).
- **Challenges faced with in-school devices:** **68%** of teachers with access to in-school devices face challenges, such as unreliable internet connectivity (**40%**), electricity-related issues (**22%**), lack of familiarity with devices (**20%**), devices not being available when needed (**19%**) and devices not working (**17%**).

2. Usage of EdTech

- **EdTech awareness:** **98%** (nearly all) of teachers are aware that technology can be used for teaching and school-related activities.
- **EdTech usage:** **87%** of teachers use EdTech. While **4%** have used it in the past but no longer do so, **6%** are aware of EdTech but have never used it.
- **Frequency of EdTech usage:** While **56%** of EdTech-using teachers use technology for teaching daily, **37%** use it a few times a week.

- **EdTech use cases:** 77% of EdTech-using teachers leverage technology to communicate with students, parents and colleagues. 63% use it for lesson preparation and delivery, 36% for self-learning and upskilling, 29% for administrative tasks and 27% for creating and conducting assessments.
- **Commonly used tools:** 84% of EdTech-using teachers use at least one of YouTube, Google or WhatsApp. 45% use at least one specialised education app; the most common are DIKSHA (21%), NISHTHA (13%), E-pathshala (12%), Smartboard (11%) and Google Classroom (11%).

3. User Sentiment around Education and EdTech

- **Training received:** 51% of EdTech-using teachers have attended training or workshops related to technology use for teaching. Government school teachers (55%) are more likely to have received training than private school teachers (41%). 79% of teachers express interest in receiving future training on technology use.
- **Perceived impact of EdTech:** 81% of EdTech-using teachers agree that EdTech leads to improved educational outcomes. 96% of EdTech-using teachers (nearly all) feel that EdTech either somewhat or to a great extent saves time.
- **Perceived risks of EdTech for self:** 52% of EdTech-using teachers agree that the use of EdTech poses risks to themselves. Top risks acknowledged are linked to overuse (54%) and wrong information (44%).
- **Perceived risks of EdTech for students:** 59% of EdTech-using teachers agree that EdTech poses risks to students. Top risks acknowledged include overuse (65%), wrong or misleading information (47%) and wasting time (29%). 85% of EdTech-using teachers have taken measures to safeguard students.
- **Support for EdTech adoption:** 88% of EdTech-using teachers would recommend EdTech to others.

4. Usage of GenAI for Teaching






- **Awareness of GenAI:** 83% of EdTech-using teachers have heard of GenAI and 71% know of its application for teaching. 46% of those who know of GenAI claim to understand how it works. However, half of them equate it with a search engine and over a third believe it copies information from the internet and repeats it. 93% of government-aided school teachers and 84% of government school teachers have heard of GenAI, as compared to 73% of private school teachers. No significant differences are observed by gender of teachers.
- **Use of GenAI:** 51% of EdTech-using teachers currently use GenAI for teaching and school-related activities. Nine out of ten GenAI-using teachers use it multiple times a week, including 61% who use it daily. Government-aided school teachers (68%) and government school teachers (51%) are more likely to use GenAI as compared private school teachers (40%).

To know more about CSF

Visit our website

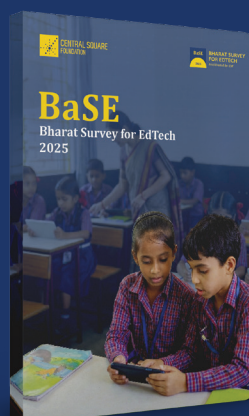
 www.centralsquarefoundation.org

Follow us on social media

-  CSF_India
-  central-square-foundation
-  CentralSquareFoundation
-  central_square_foundation
-  CentralSquareIndia

Contact

 base@centralsquarefoundation.org



BaSE Report

Bharat Survey for EdTech 2025



Scan to learn more about BaSE and access the full report